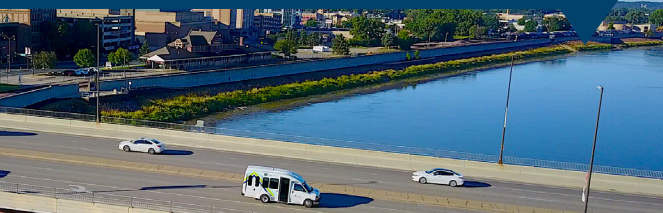


TITLE VI NOTIFICATION



TRUE Transit operates its programs without regard to race, color, and national origin in accordance with Title VI of the Civil Rights Act. Any person who believes he or she has been aggrieved by an unlawful discriminatory practice under Title VI may file a complaint with TRUE Transit.

For more information on the civil rights program, obligations, and complaint procedures, please contact the Transportation Manager.

TRUE Transit
507-388-8783 or 800-560-1575
TRUEtransit@vinevolunteers.com
421 E. Hickory St. Mankato, MN 56001

A Title VI complaint may also be made by contacting the Title VI Specialist at the Minnesota Department of Transportation, Office of Civil Rights.

MN Department of Transportation
395 John Ireland Blvd., Mail Stop 170
St. Paul, MN 55155-1899
P: 651-366-3073 F: 651-366-3129

Persons with limited English proficiency may contact the Transportation Manager.

Individuals who are deaf, blind or hard of hearing, or speech disabled may call Minnesota Relay at 1-800-627-3529.



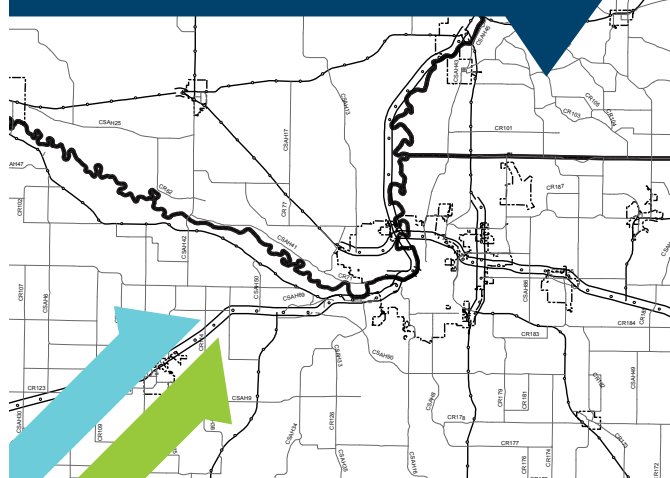
TRUE TRANSIT

Town Rural Urban Express

RURAL COUNTY-WIDE PUBLIC TRANSPORTATION



BLUE EARTH, NICOLLET & LE SUEUR COUNTIES



TRUETRANSIT.ORG

HOW TO RIDE

1 Schedule a ride

Rides must be booked at least two business days in advance or up to one month in advance online or by calling (800) 560-1575.

2 Pay for your ride

Passenger fares on scheduled routes are \$3 one-way.

You can pay for your ride in advance or on the bus.

Over the phone: Pay with your credit card by calling (507) 386-5580.

On the bus: Pay with tokens or cash. Tokens can be purchased at various locations; please contact us to find the nearest location to you.

By mail: Send your payment via mail and we'll apply credit to your account or whomever's account you choose.

If you need a ride outside our scheduled routes, please contact TRUE Transit and we will do our best to accommodate your request for a premium price calculated by millage starting at \$6 per one-way trip.

3 Enjoy your ride

Sit back and relax on our comfortable buses. All our buses have mobility lifts to help those in need of assistance. We have a few rules we'd like you to follow to ensure a good experience for all. Contact TRUE Transit for a complete policy guide.

Rules:

Be prepared 15 minutes before your scheduled pick up time. The bus will not wait longer than 3 minutes.

If you have not pre-paid for your ride, have exact cash or tokens ready. Drivers cannot make change.

Please be respectful to other passengers; shoes, shirt and good personal hygiene are required. No profanity, fighting, harassment, horseplay or abuse is allowed. No eating, drinking, use of tobacco, E-Cigarettes, alcohol or drugs is permitted.

Cancellations:

If you need to cancel your trip, please let us know as soon as possible, but no later than two hours before your scheduled pick-up time or you will be recorded as a no-show which may result in a suspension from service.

Hours of Operation:

We operate Monday - Friday from 8 am – 5 pm. Please contact us about any rides that would fall outside of these times to see whether special arrangements can be made.

TRUE Transit will not operate on these holidays:

- New Year's Day
- Memorial Day
- July 4th
- Labor Day
- Thanksgiving Day
- Christmas Eve Day
- Christmas Day

Weather Storm Closings:

We will not operate during dangerous weather. If the service closes, it will be announced on local radio stations and posted on our website.

(800) 560-1575

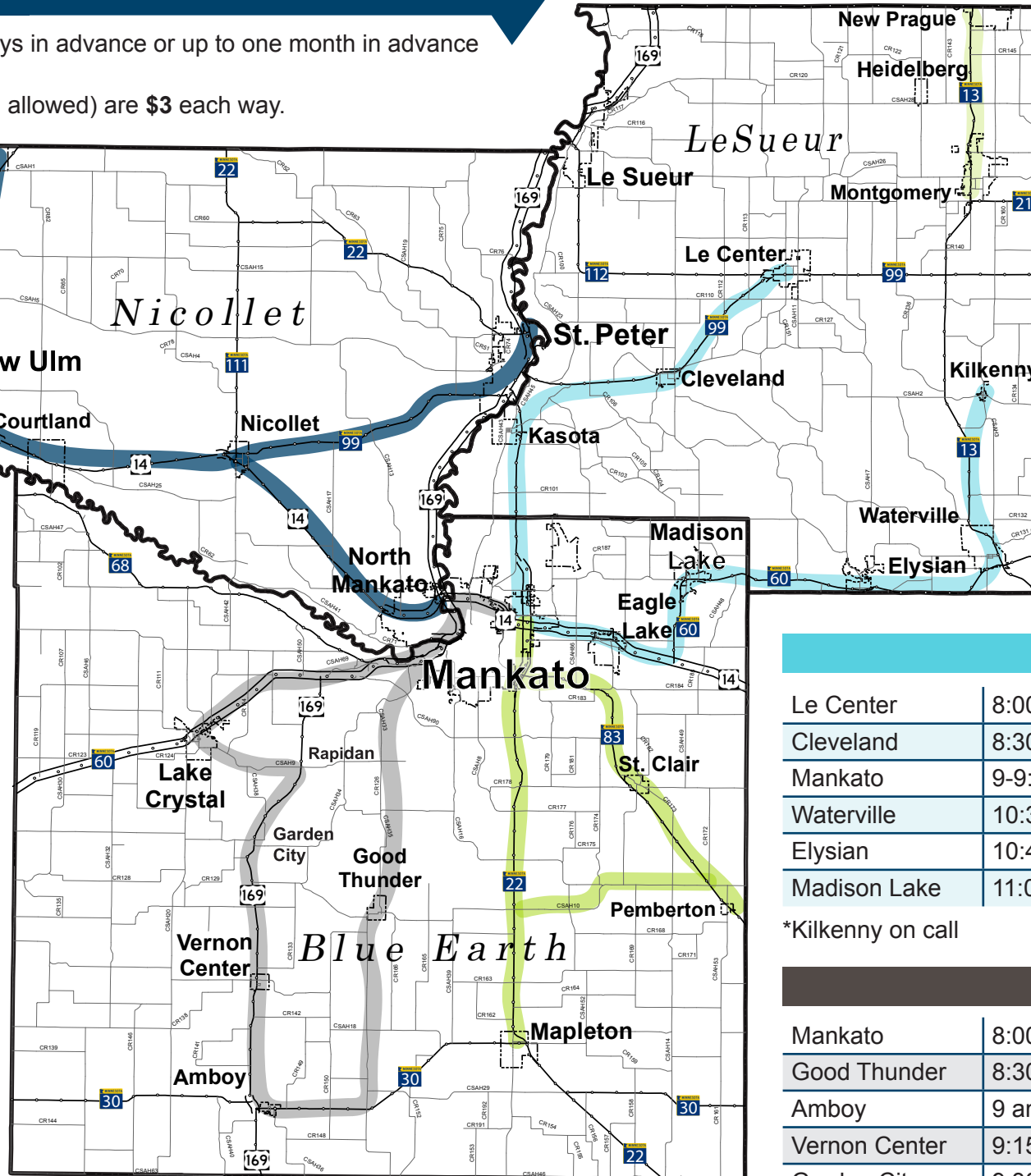
TRUETRANSIT.ORG

ROUTES & SCHEDULES

SCHEDULED ROUTES

Rides must be booked at least two business days in advance or up to one month in advance online or by calling (800) 560-1575.

Fares on any scheduled routes (slight deviation allowed) are \$3 each way.



*Routes are subject to change.

Please check the website www.truetransit.org or call 507-388-TRUE (8783) for the latest routes and schedules.

MONDAY ROUTE

St. Peter	8:00 am				5:00 pm
Nicollet	8:30	10:15	11:45	3:15	4:45
Courtland	8:45	10:00	12 pm	3:30	4:30
New Ulm	9:15-9:45		12:30-1:30		4:15
Mankato		10:45-11:15	2:15-2:45		

*Lafayette on call

TUESDAY ROUTE

Mankato	8:00 am	10-10:30	2-2:30 pm	4:30 pm
St. Clair	8:30 am		3:00 pm	
Pemberton	8:45 am		3:15 pm	
Mapleton	9:15 am		3:45 pm	

*Beauford on call

THURSDAY ROUTE

Le Center	8:00 am			2:30 pm
Cleveland	8:30 am			2:00 pm
Mankato	9-9:30 am	11:30 am-12 pm	1-1:30 pm	3:15-3:45 pm
Waterville	10:30 am			4:45 pm
Elysian	10:45 am			4:30 pm
Madison Lake	11:00 am			4:15 pm

*Kilkenny on call

THURSDAY ROUTE

Mankato	8:00 am	10:15-10:45 am	2-2:30 pm	4:45 pm
Good Thunder	8:30 am	3:00 pm		
Amboy	9 am	3:30 pm		
Vernon Center	9:15 am	3:45 pm		
Garden City	9:30 am	4:00 pm		
Lake Crystal	9:45 am	4:15 pm		

*Rapidan on call

In Town Rides

Flexible transit service within city limits (*and between for noted cities) during allotted times.

	8 am - 12 pm	1-5 pm
Monday	Lake Crystal	
Tuesday	Le Center	*Montgomery *Heidelberg *New Prague
Wednesday	Mapleton *Montgomery *Heidelberg *New Prague	Lake Crystal Le Center
Friday		Lake Crystal *Montgomery *Heidelberg *New Prague

County-Wide Rides

County transit service to predetermined destinations during allotted times.

Monday (8 am - 5 pm)	From anywhere in Le Sueur County to Le Sueur or Le Center
Wednesday (8 am - 5 pm)	From anywhere in Nicollet County to St. Peter or Mankato
Friday (8 am - 5 pm)	From anywhere in Blue Earth County to Mankato